



## Scene of the Crime – Kimpo Reprise

by  
**Homer**

Falcon Version	Patch Status	Theatre of Operations					
Allied Force	V1.13	<b>Balkans</b>		<b>Balkans 2005</b>		<b>Balkans 2010</b>	
		<b>Korea</b>	x	<b>Korea 2005</b>		<b>Korea 2010</b>	

<b>Mission Success criteria</b>	All Flights	Ensure 2006 <sup>th</sup> HQ Battalion suffers no losses before 18.00hrs.
<b>Mission Partial Success criteria</b>	All Flights	Ensure 2006 <sup>th</sup> HQ Battalion suffers no more than 40 percent losses before 18.00hrs.
<b>Air to Air Weapon Loadout</b>	Free	
<b>Air to Ground Weapon Loadout</b>	Free	
<b>Mission Flight Plan</b>	Free	

Package Information					
Takeoff time	Callsign	Task	Target	Package # <sup>(1)</sup>	AC # & type
16:23.30	Chalis 1	AWACS	ELINT	1978	1 x E-3C Sentry
16:53.30	Falcon1	DCA	2006 <sup>th</sup> HQ Battalion	1984	4 x F-16C50
16:55.30	Cowboy 1	DCA	2006 <sup>th</sup> HQ Battalion	1984	4 x F-16C50
<sup>(1)</sup> Blue colour indicates for human use. Red colour indicates for AI only.					

### BACKGROUND

Despite being heavily advised against it, President Doosh tried to make a short flight from Taegu to Kimpo Airbase as part of inspirational Global Tour of Duty. Despite our best efforts, Kimpo Airbase took a lot of damage and his flight was diverted to Suwon Airbase, just to the south of Seoul. Upon landing he was immediately informed of the heavy casualties suffered in the attack on Kimpo, and so he has decided he is going to make this trip anyway, only this time he has commandeered an HQ Battalion to drive his to Kimpo. He is nothing if not persistent...

### MISSION

Your squadron has been tasked to fly a Barrier CAP patrol along the DMZ to the North of Kimpo Airbase to help ensure President Doosh's convoy arrives at Kimpo. His ETA is 18:00hrs.

## MISSION SUCCESS CRITERIA

To achieve mission success, the HQ Battalion must be 100 percent operational at 18.00hrs ZULU.  
To achieve partial success, the HQ Battalion must be 60 percent operational at 18.00hrs ZULU.  
Losses sustained in excess of 40 percent (less than 60 percent operational) will result in mission failure.

## FLIGHT PARAMETERS

**Home Plate :** Kunsan Airbase.

**Alternate :** Seosan Airbase.

**Weapons :** Loadouts are free, you may select any and all weapons you feel your package will require to ensure you succeed in your mission.

**Flightplan :** The flightplan is free, you may alter it to suit accordingly (see Image 1 below).

**Weather :** At home plate, the weather is clear, light to medium winds.  
At the patrol area, overcast at 6,000 feet but clearing.

## FRIENDLY SUPPORT

An E-3 AWACS is on station south of Seoul to provide ELINT.  
HAWK SAM installation at Kimpo Airbase.  
K-200 AAA installation at Mandumi Airbase.  
Patriot SAM installation at Seosan Airbase.

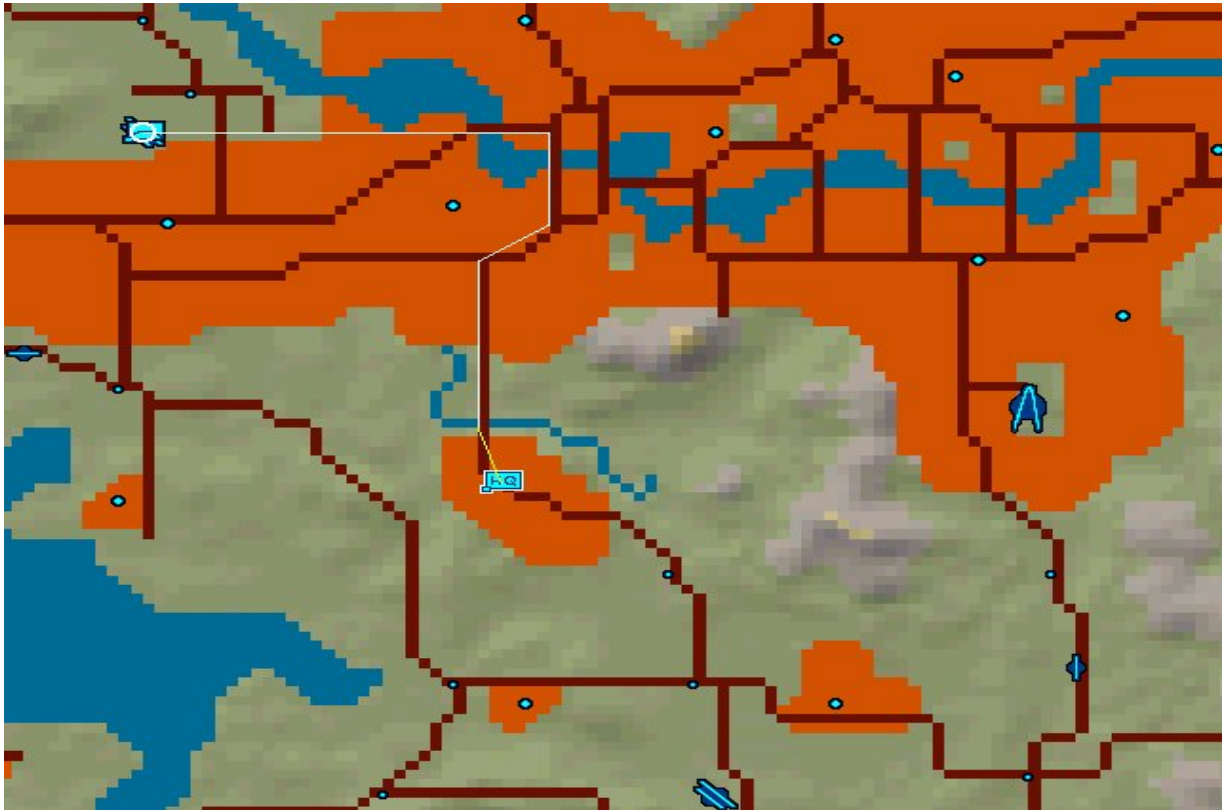
## ENEMY INTEL

One fixed SA-2 installation remains near the DMZ.  
One SA-3 installation has become active near the DMZ at 4<sup>th</sup> Infantry Corps Base.  
SA-5 installations are at Wonsan and Ongjin. The SA-5 at Koksan has been quiet since the earlier raid and is presumed to have been disabled (see Image 2 below).  
At least two AAA Battalions are believed to be employed on the DMZ.

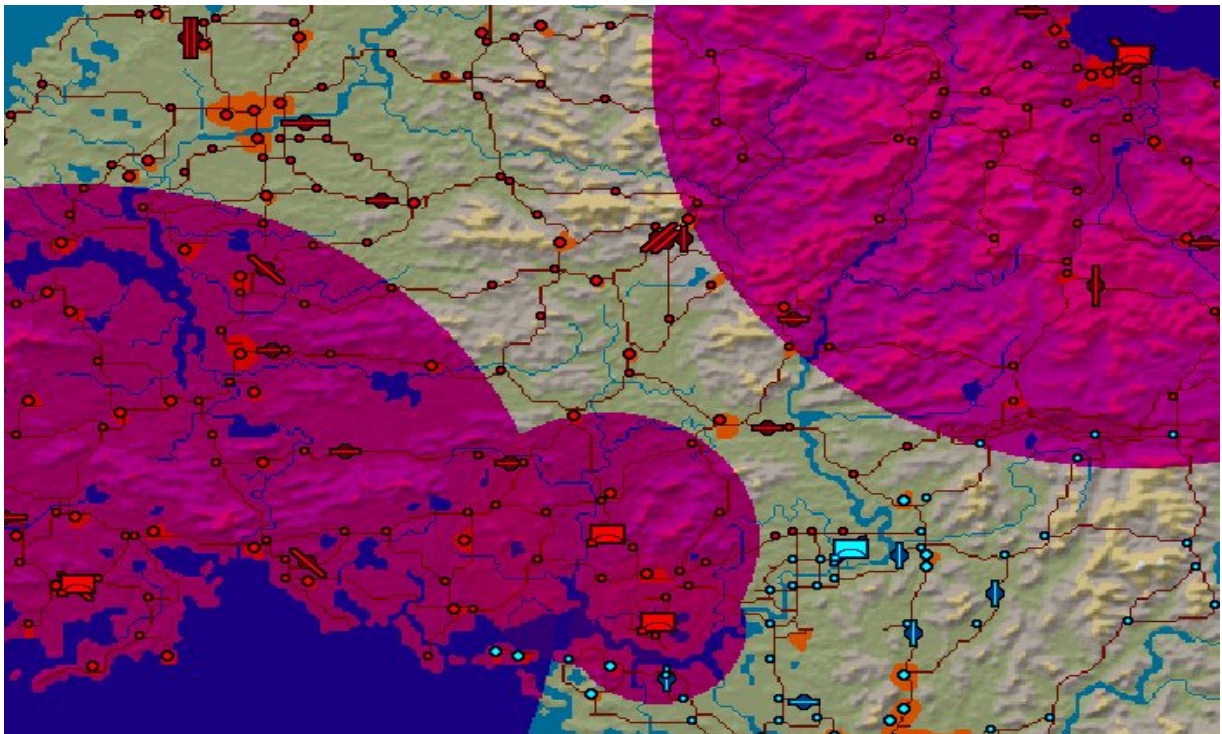
All SAM threats can be confirmed in the Online Planner.  
All DPRK squadrons can also be confirmed in the Online Planner.

## IMAGES

**Image 1** – President Doosh's convoy route.



**Image 2** – Enemy SAM coverage.



Any questions, ask! Good Hunting.